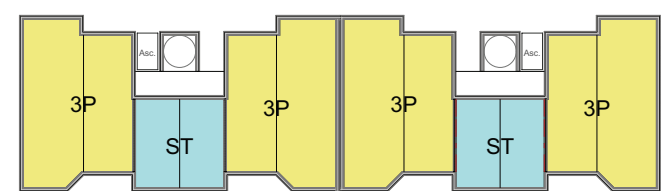
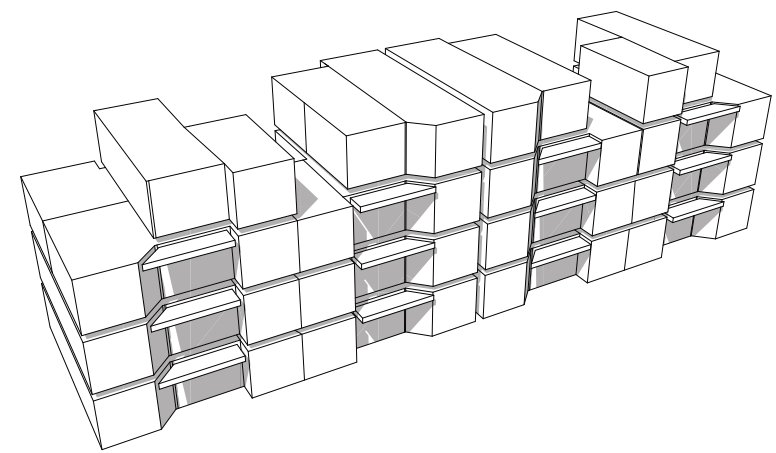
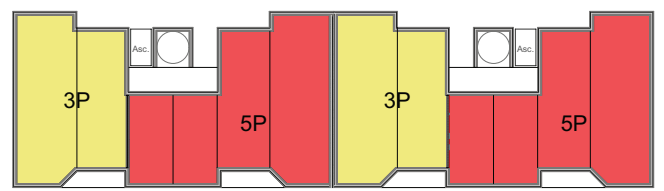
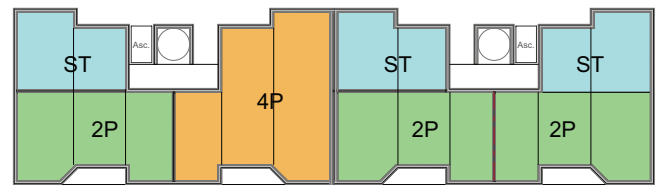
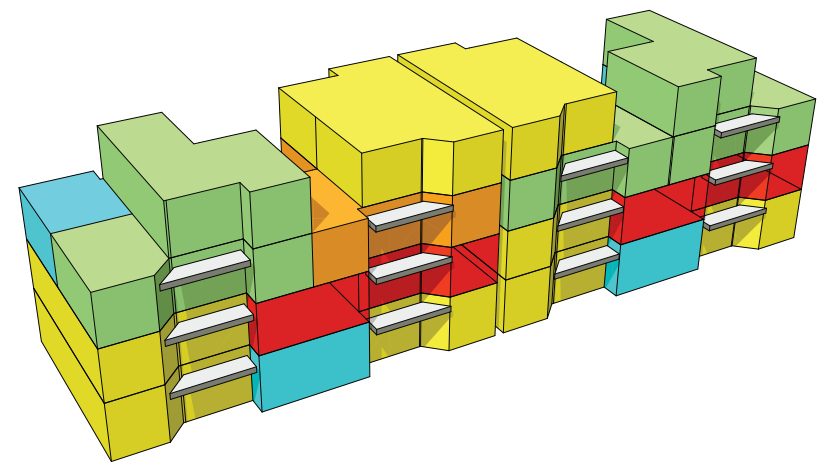
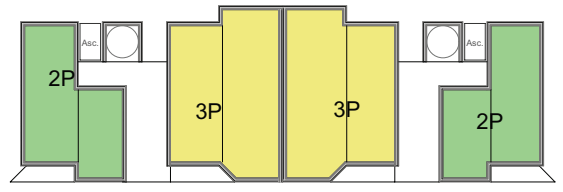
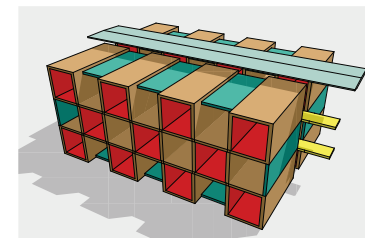
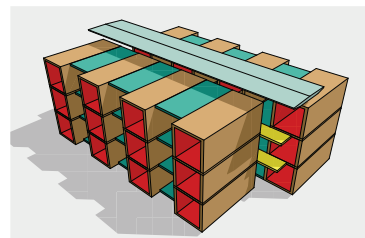
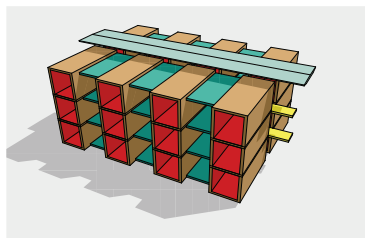
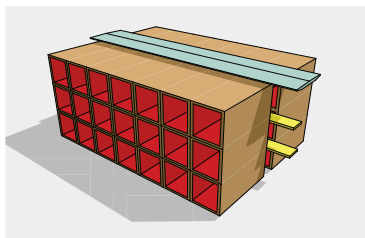


Du 2 pièces au 5 pièces: combinatoires multiples

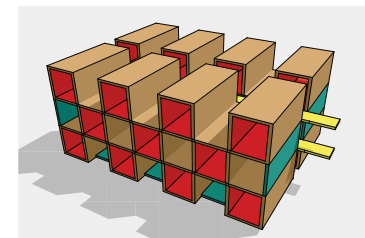
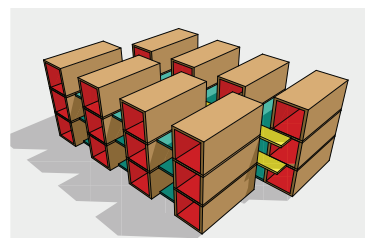
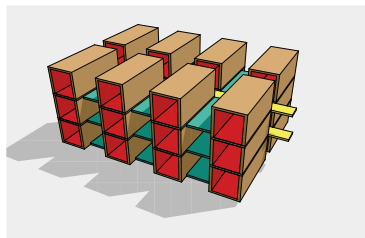
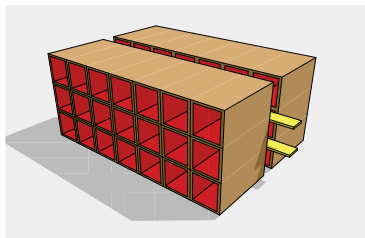


Etude de scenarii de construction pour une unité de 42 chambres

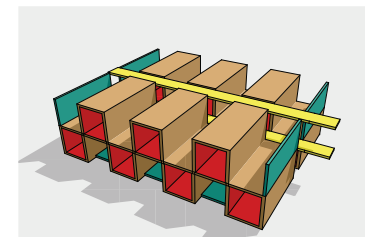
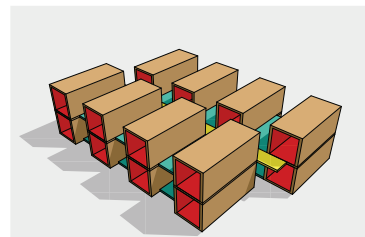
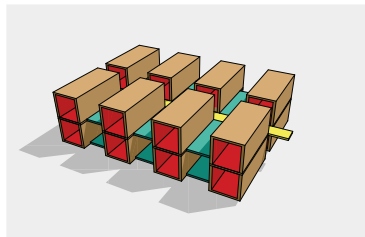
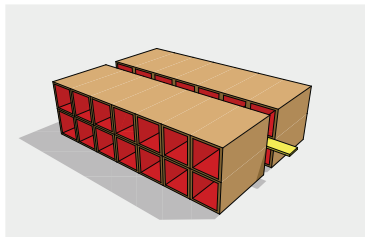
Etape 4
R+3



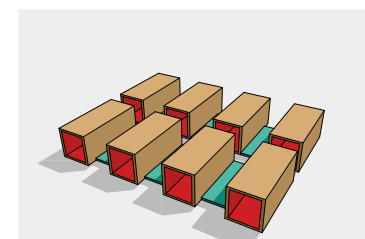
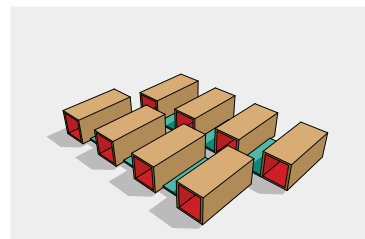
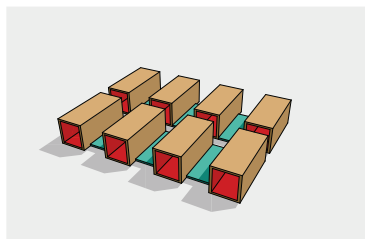
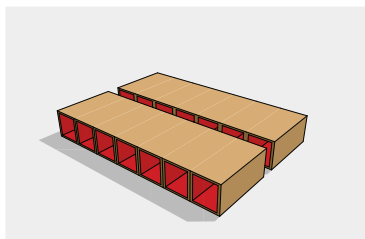
Etape 3
R+2



Etape 2
R+1



Etape 1
RdC



Variante 1

Modules 3d: 42
refends 2d: 0
planchers 2d: 0

Variante 2

Modules 3d: 24
refends 2d: 0
planchers 2d: 24

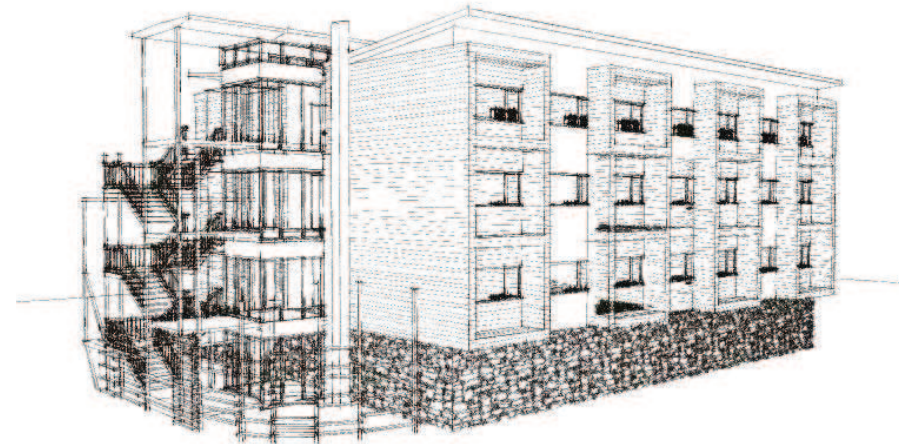
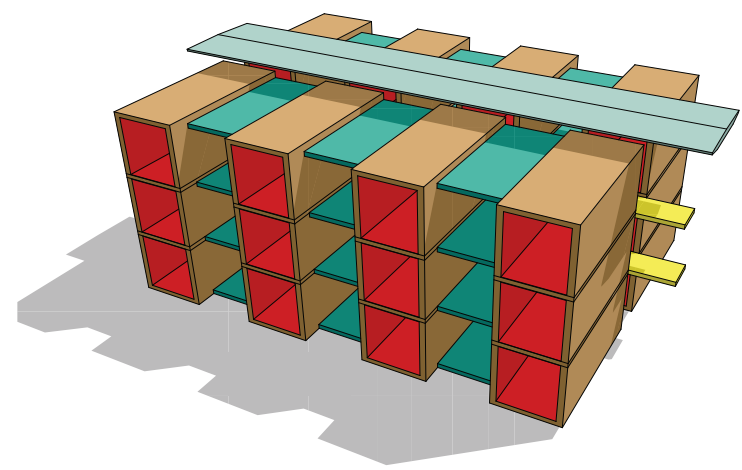
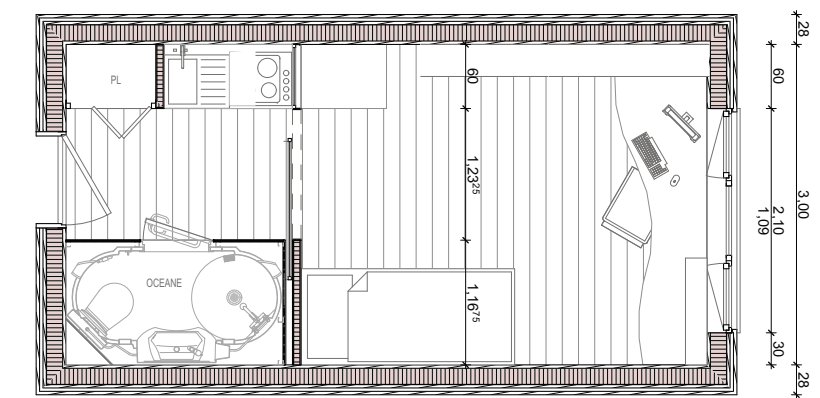
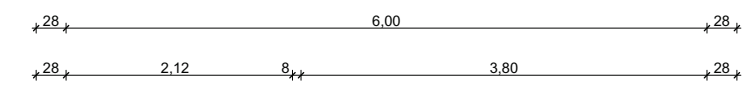
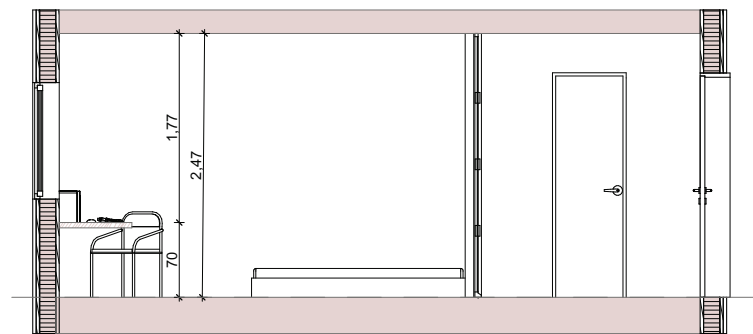
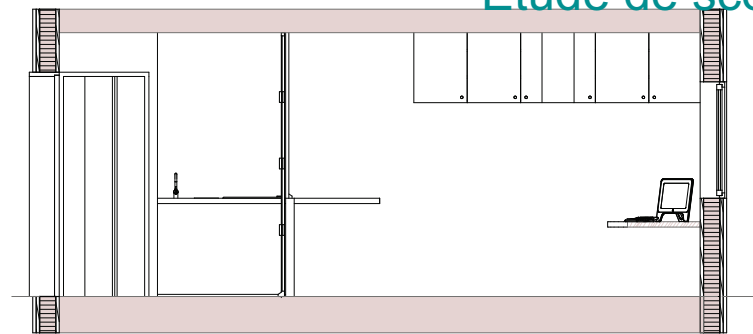
Variante 2bis

Modules 3d: 24
refends 2d: 0
planchers 2d: 24

Variante 3

Modules 3d: 22
refends 2d: 4
planchers 2d: 12

Etude de scenarii de construction pour une unité de 42 chambres



Cellule type 1/50